

POLE MOUNTED LADDER BRACKET

U-TECK's Pole Mounted Ladder Brackets provide a stable anchor while working at height.

Too often the angle of the ladder is positioned under the cabinets creating an unsafe angle for the worker to stand, open the cabinet, and perform routine functions

Features:

- Provides Correct Ladder Positioning for Techs
- Permanently attaches to poles under Cabinets
- Attachment point for Safety Harness
- Powder Coated Steel and Stainless Hardware
- Brackets are mounted to the pole using thru-bolts (not provided).
- Options:
 - Adjustable bracket sizes ranges from 21" to 27"
 - Fixed brackets offer 3 sizes 18", 21", and 24"



Used in conditions where Distribution Cabinets, UPS Cabinets and other equipment are mounted onto utility poles where technicians need ladder access.



*Pole Attachment Hardware Not Included

Ordering Information

Product:	Description:	VPN:
Pole Mounted Ladder Bracket -Almond	40Lbs	55900-001
Fixed Pole Mounted Ladder Bracket, fixed 18"	31Lbs	55905-18
Fixed Pole Mounted Ladder Bracket, fixed 21"	33Lbs	55905-21
Fixed Pole Mounted Ladder Bracket, fixed 24"	34Lbs	55905-24

www.uteck.com | 1-800-542-7011

LADDER BRACKET ASSEMBLY & INSTRUCTIONS



Position the Mounting Bracket at the desired location and mark the top mounting hole on the pole.



Drill through the pole making sure that there are no obstructions on the opposite side.



Loosely attach the Mounting Bracket using the appropriate pole mounting hardware.



Drill through the bottom mounting hole and insert the pole mounting hardware.



Securely tighten the Mounting Bracket to the pole.



Insert the Support Extension with the Safety Belt Bracket facing upwards.



Assembly Hardware located inside base section!

Position the Support Extension to the desired location and line up the holes of the fiber cable to be used in both the Mounting Bracket and the Support Extension.



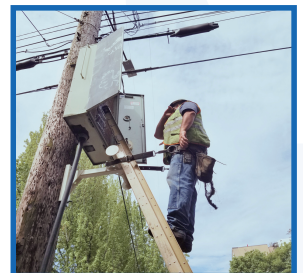
Insert (2) 4" hex head bolts with fender washers into adjusting holes on the side of the Mounting Bracket.



Attach additional fender washer, lock washer, and hex nut onto the bolts and fully tighten using a 5/8" socket and adjustable wrench.



Lean the ladder against the Pole Mounted Ladder Bracket and secure using your company's standard practice.



Secure yourself using your safety belt by looping your belt over and through the Safety Belt Bracket.

Pole Mounted Ladder Bracket (PMLB) Assembly
The PMLB consists of 2 parts, the Mounting Bracket and the Support Extension.

Support Extension

Pole Mounting Hardware
(not included)

Mounting Bracket

Safety Belt Bracket

