

SPLICER® SEAT

U-TECK has combined a longtime, craft-accepted design with a new polyethylene material to produce a rugged splicer seat that can be warranted for up to five years.

With the U-TECK Splicer Seat, there is never a need for water treatment because it is waterproof. No need for painting, either; the color is molded into the seat. And no worries about splintering. It is ouchless! This seat can be drilled to attach other equipment, such as splicing machines.

Features:

- Extremely rugged
- Convenient tool slot
- Traditional design
- Large sitting area
- Polyethylene material
- Textured surface
- Five-year warranty
- Available in grey & safety orange

U-TECK has even included a handy tool slot in the top to hold your tools, connectors, or other small items when you need them close at hand. Conventional splicing machines can be attached to the Splicer Seat. The unique design of the seat allows it to be used at three different positions for varied heights. The Splicer Seat also makes an excellent footstool. With this seat, you will never need to purchase a replacement again.



Ordering Information

| Product: | Description: | VPN: |
|-------------------------|-----------------------------------|----------|
| Grey "P" Splicer Seat | 10 lbs., 18"L x 14.75"W x 11.75"H | 55430 |
| Orange "P" Splicer Seat | 10 lbs, 18"L x 14.75"W x 11.75"H | 55430-OR |

www.uteck.com | 1-800-542-7011

SPLICER SEAT ACCESSORIES



MS2 Splicer Adapter

Fits on your MS2 Splicing tool to easily attach and remove it from the splicer seat



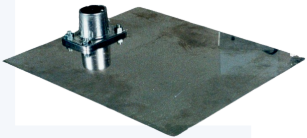
Seat Cushion

Thickly padded cushion in a weather-resistant cover. Comes complete with three large pockets for tools and materials.



Universal Splicing Head Adapter

Used to temporarily attach either a 710 or MS2 splicing machine to the Ergonomic Seat or the 'P' Splicer Seat. Can be mounted in several locations as desired by individual splicers.



Splicing Arm Base

Fits under your Splicer Seat to attach your modular splicing tool when you do not want to attach it directly to the seat.



710 Splice Adapter

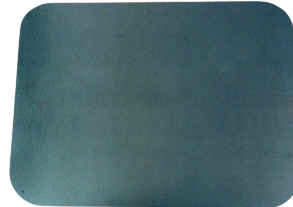
Fits on your 710 modular splicing tool to easily attach and remove it from the Splicer Seat



Tool Base Adapter



Assists you when permanently attaching your 710 splicing tool to the Splicer Seat



Splicing Mat

3ftx4 ft rugged, washable and reusable pad that covers the work area. Keep your cables out of the dirt and your tools out of the mud and weeds!



Retro Fit Kit

Allows the upgrade from the Splicer Seat to the Ergonomic Seat. Includes the splicer seat adapter, the Ergonomic Seat and even the drill bits to drill the holes.



Ordering Information

| Product: | Description: | VPN: |
|---------------------------|--------------|----------------------|
| MS2 Splice Adapter 710 | 1 lb. | 55420 |
| Splice Adapter Tool Base | 1 lb. | 55500 |
| Adapter Seat Cushion | 1 lb. | 55450 |
| Splicing Mat Splicing Arm | 3 lbs. | 55430-CU-BLK |
| Base Universal Splice | 6 lbs. | 55430-MAT 55430-BASE |
| Adapter Retro Fit Kit | 16 lbs. | 55460 55430-RETROKIT |